



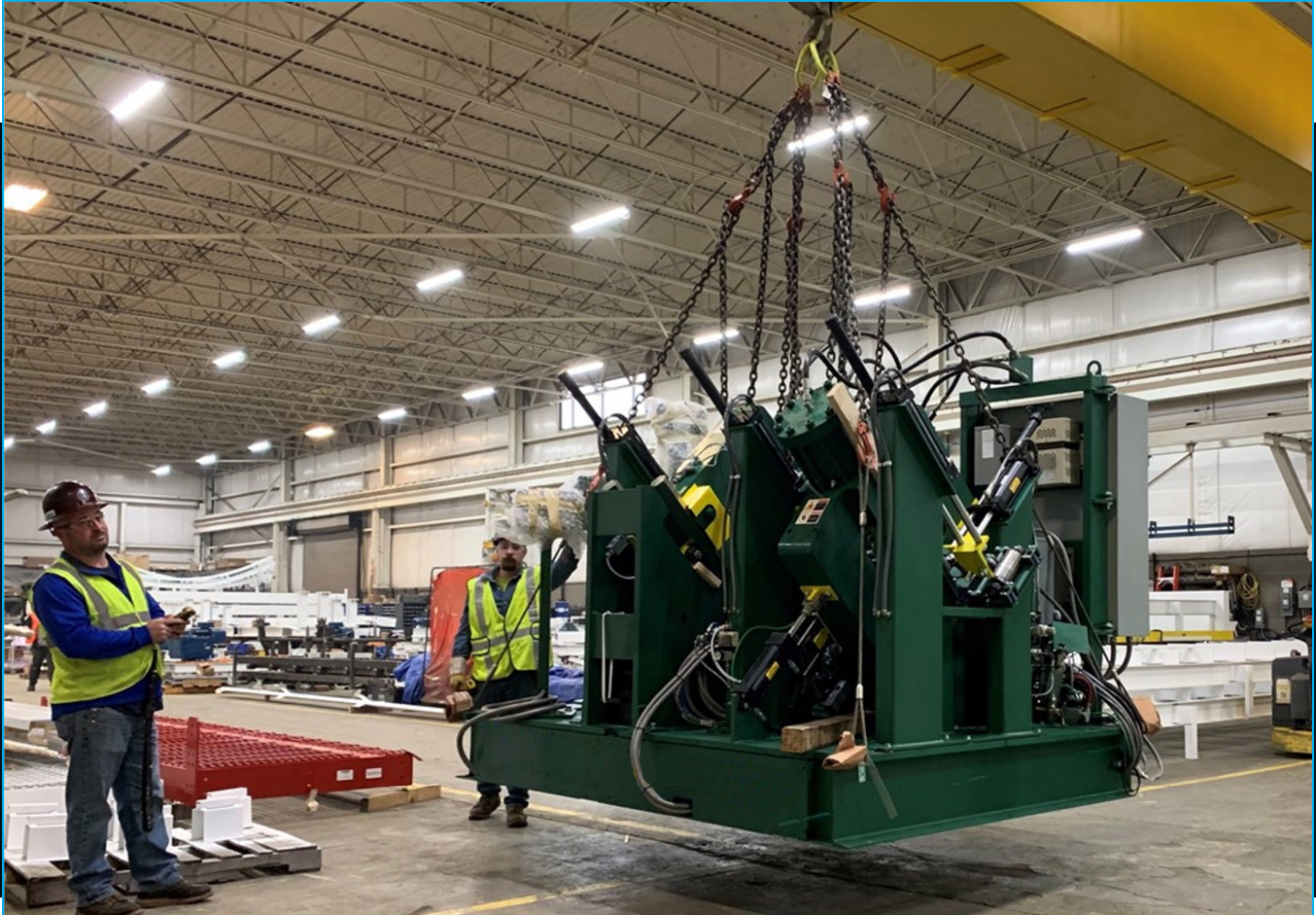
Central ***INDUSTRIAL GROUP***

A MEMBER OF THE  **TSUBAKI** GROUP

PRIME CONTRACTOR & CONSTRUCTION MANAGEMENT
INSTALLATION | FABRICATION | CIVIL WORK
PLANT MAINTENANCE

Central Industrial Group is a division of Central Conveyor and is the ultimate utility player for the organization.

From providing maintenance support for our automotive customers to framing an office, the Central Industrial Group team is built to succeed in rapidly changing environments often under expedited timelines.

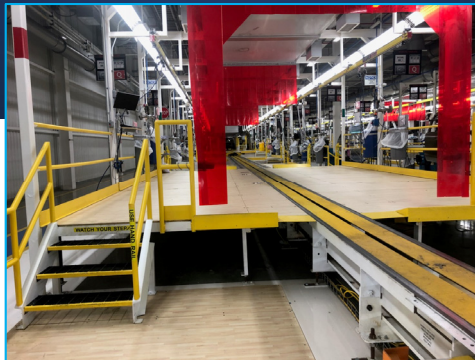


We are dedicated to establishing a partnership with our customers. We share the responsibility for the success of the overall project and know that effective communication is the key to that success, not only for the work at hand, but in relationships as well.

We provide fair cost implementation under expedited timelines and share the responsibilities between OEM, integration teams and the installation contractor.

Our management staff consists of safety conscious, team-oriented, highly qualified individuals who are motivated to help assess, coordinate, and provide innovative solutions for your projects.

Prime Contractor & Construction Management



**Automotive | Civil | General Industry
Rigging & Relocation**

Installation



**Material Handling | Rigging | Stamping
Regenerative Thermal Oxidizers (RTO) | Structural**

Fabrication



Conveyors | Fixtures | Platforms | Racks | Structural



Excavating | Concrete

Plant Maintenance



**Millwright Services | Electrical | Controls
Piping | Facilities**



Locations



Kansas City, MO

- KCI headquarters and production facility
- Project management, engineering, estimating and fabrication capabilities
- Controls, electrical engineering and panel build capabilities
- 90,300 square ft.



Wixom, MI

- Central Conveyor primary production facility
- Project management, engineering, estimating and fabrication capabilities
- Controls, electrical engineering and panel build capabilities
- 84,000 square ft.



Bessemer, AL

- Project management, engineering estimating and fabrication capabilities
- Controls, electrical engineering and panel build capabilities
- 16,500 square ft.



Troy, MI

- Central Industrial Group satellite office for sales and estimating. Located in Gallagher-Kaiser Office Complex.

Central INDUSTRIAL GROUP

A MEMBER OF THE  **TSUBAKI** GROUP

52800 PONTIAC TRAIL, WIXOM, MI 48393 | 248.446.0118 | WWW.CENTRALCONVEYOR.COM

For Quotations or Inquiries: Please contact tooling@centralconveyor.com